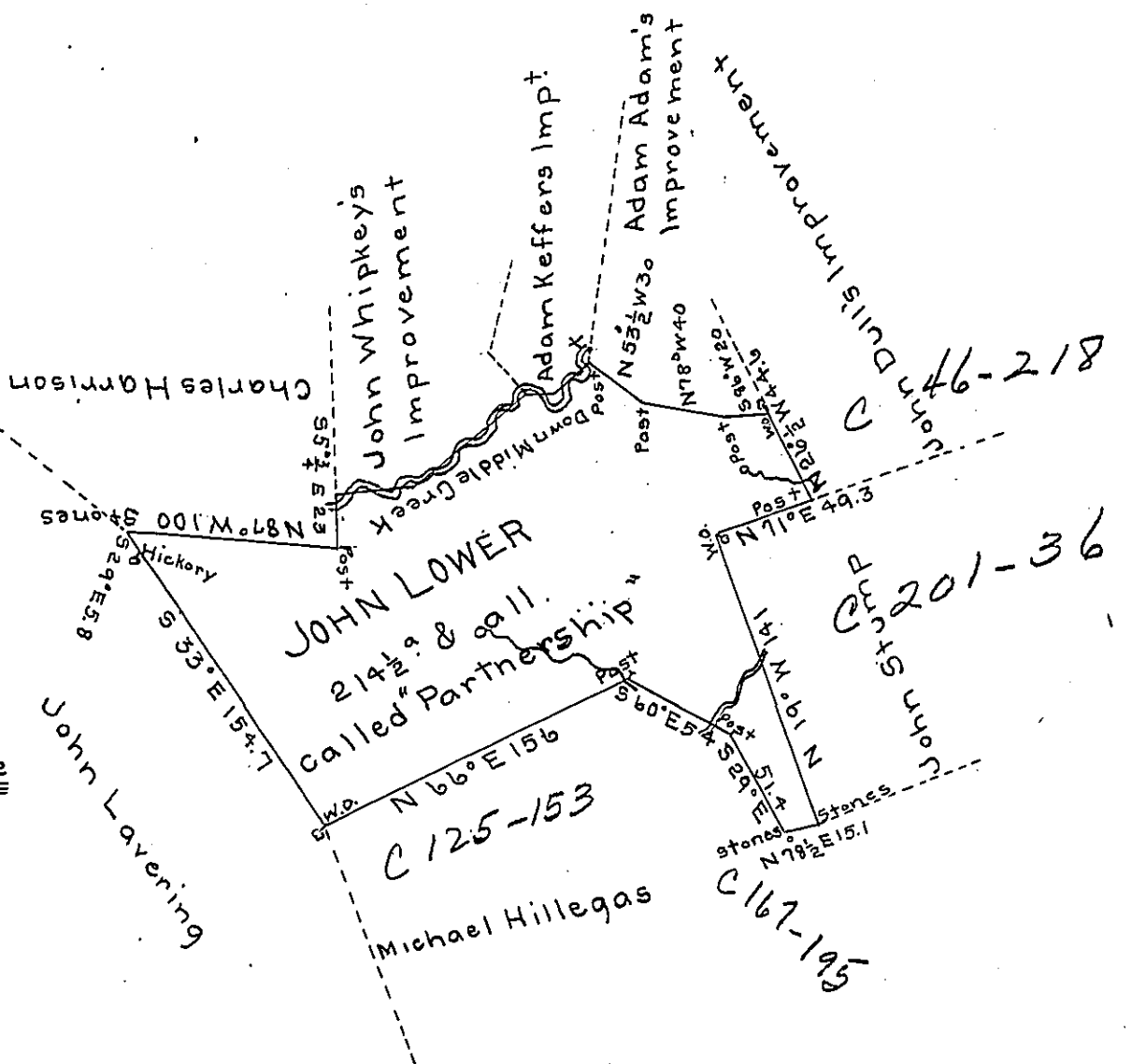


Courses & Distances
 Down Middle Creek &
 binding with the mid-
 dle of the same, by Con-
 sent of the parties. Begin-
 ning at a post, thence

- S 49 $\frac{1}{2}$ ° W 21.9
- N 89° W 12.
- S 58 $\frac{1}{2}$ ° W 40.
- S 6° W 38
- S 51 $\frac{1}{2}$ ° W 22.
- S 84° W 35.7 to a post
 in Charles Harrison's line

135,4



Situate on the East side of Middle Creek and on Scrub
 Glade creek including his improvement in Milford Township
 Somerset County, late Bedford, and surveyed the 9th day of
 May 1794 in pursuance of a warrant dated the 26th day of
 February 1788.

To Daniel Brodhead Esquire
 Surveyor General

Alexander M. Clean
 Deputy

IN TESTIMONY that the above is a copy of the original remaining on file in
 the Department of Internal Affairs of Pennsylvania, made
 conformably to an Act of Assembly approved the 16th day of
 February, 1833, I have hereunto set my Hand and caused
 the Seal of said Department to be affixed at Harrisburg,
 this...eleventh...day of August...1905

Loac R. Brown
 Secretary of Internal Affairs